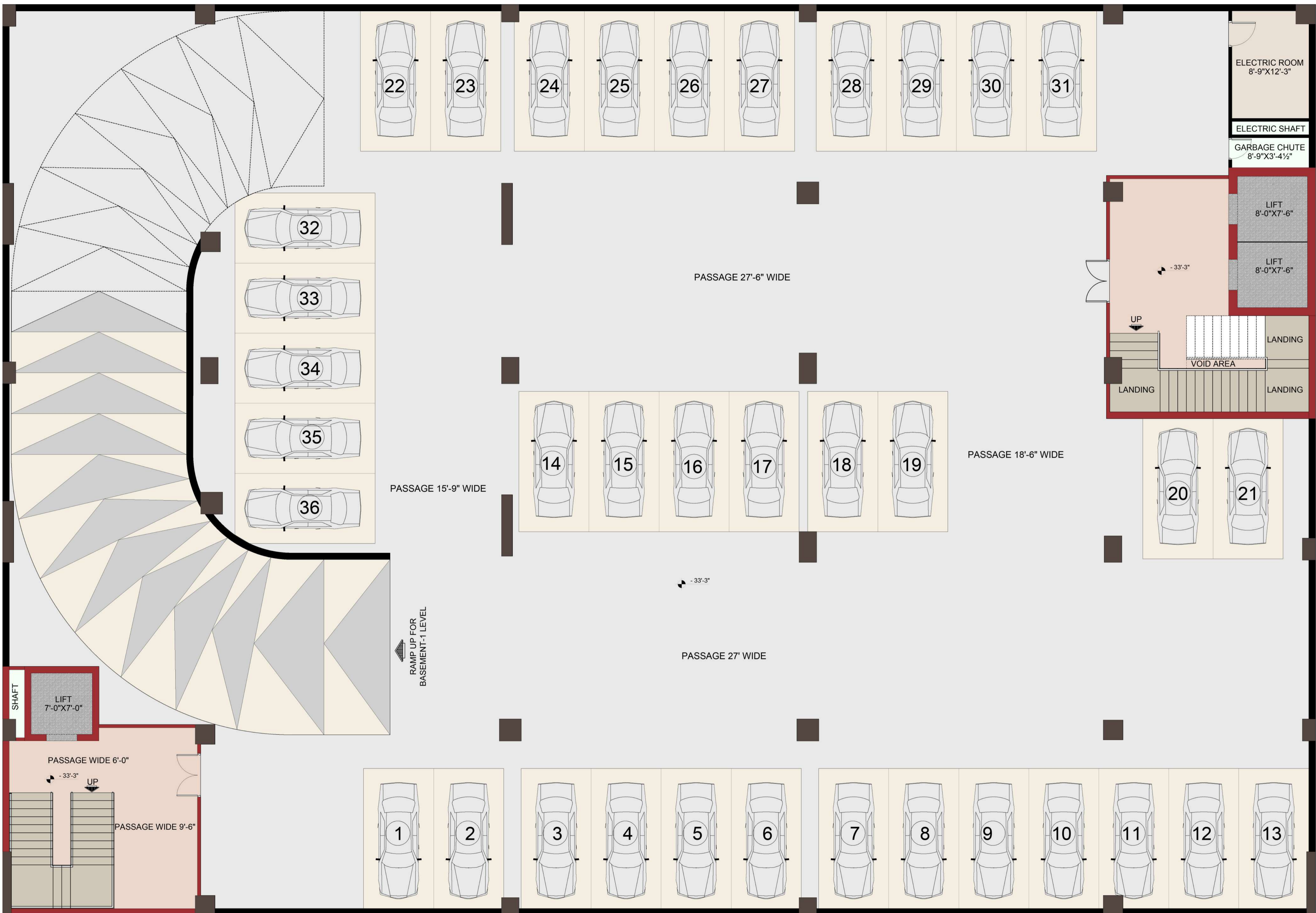




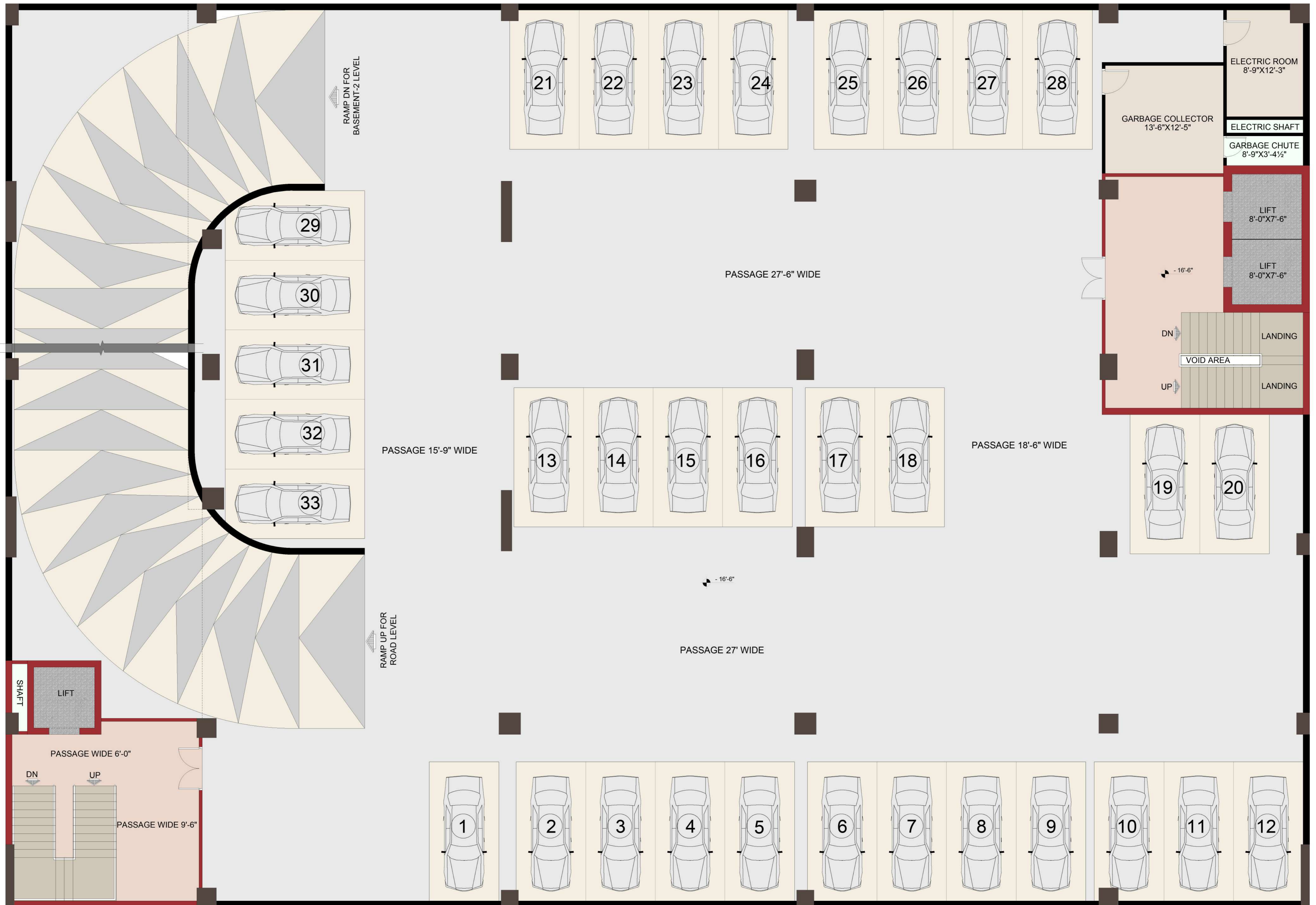
5G EMPORIUM

PLOT # 01A, STREET JINNAH BOULEVARD,
KANWAR BLOCK, TOP CITY-1, RAWALPINDI.

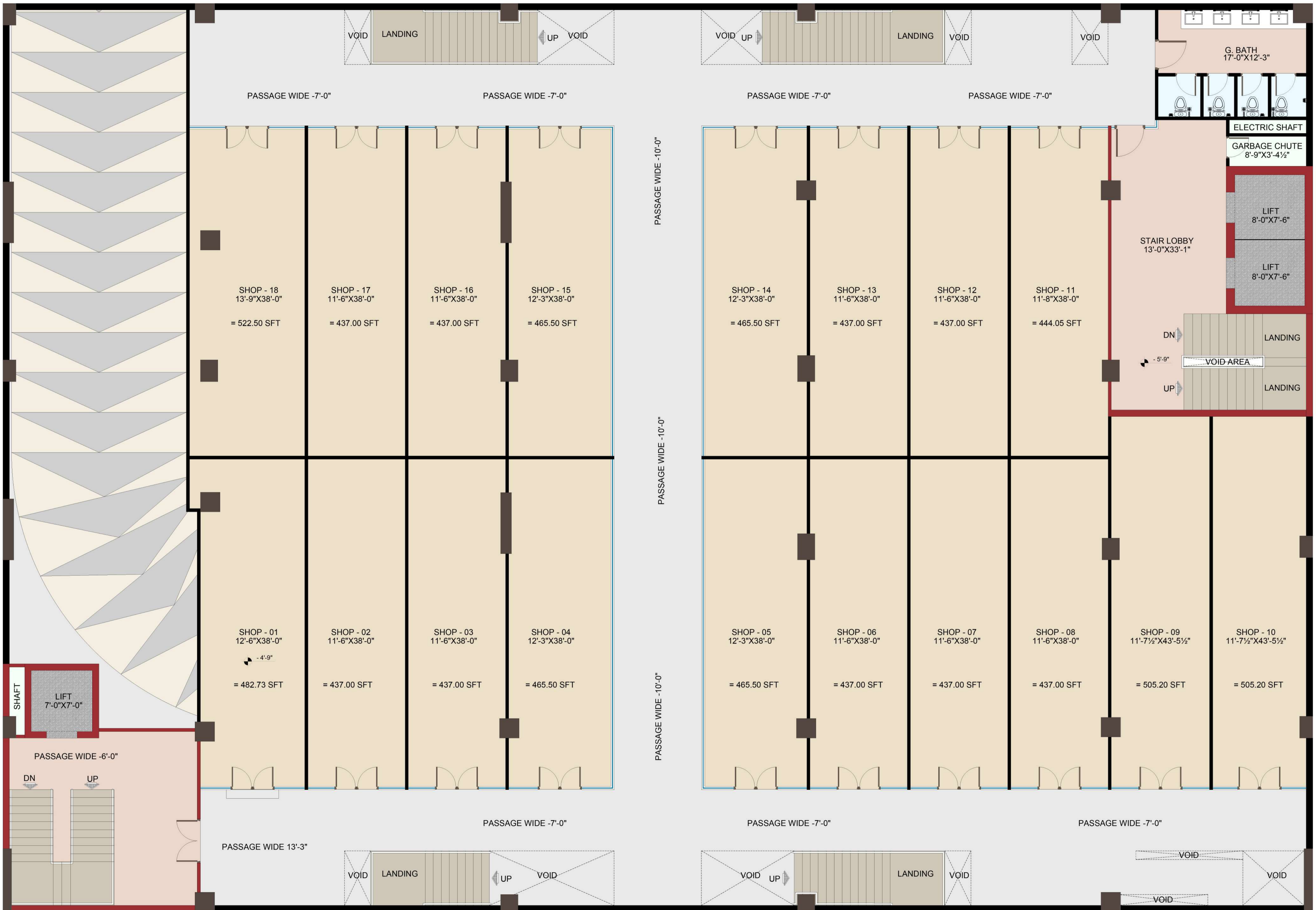
 **JAMSHAIK KHAN**
ARCHITECT & ASSOCIATES
E: jimsarc9999@yahoo.com +92-3216155999
OFFICE PLAZA NO-6, CAPITAL ENCLAVE ,EXPRESS WAY , ISLAMABAD



F.F.E LAYOUT PLAN (BASEMENT (2) FLOOR)
 NUMBER OF CARS = 36



F.F.E LAYOUT PLAN (BASEMENT (1) FLOOR)
 NUMBER OF CARS = 33



F.F.E LAYOUT PLAN (LOWER GROUND FLOOR)



F.F.E LAYOUT PLAN (GROUND FLOOR)



F.F.E LAYOUT PLAN (FIRST FLOOR)

L. BATH
17'-9"X9'-9"

G. BATH
23'-0"X12'-7"

ELECTRIC SHAFT

GARBAGE CHUTE
8'-9"X3'-4½"

LIFT
8'-0"X7'-6"

LIFT
8'-0"X7'-6"

LANDING

VOID AREA

LANDING

SHOP # 22
14'-7½"X12'-3"
= 179.06 SFT

SHOP # 21
14'-7½"X12'-3"
= 179.06 SFT

SHOP # 20
14'-7½"X12'-3"
= 179.06 SFT

SHOP # 19
14'-7½"X12'-3"
= 179.06 SFT

SHOP # 18
14'-7½"X12'-5"
= 181.81 SFT

STORE
9'-10½"X4'-0"

SHAFT
LIFT
7'-0"X7'-0"

PASSAGE WIDE 6'-0"

PASSAGE WIDE -8'-0"

PASSAGE WIDE -8'-0"

PASSAGE WIDE -8'-0"

PASSAGE WIDE -8'-0"

PASSAGE WIDE -8'-0"

PASSAGE WIDE -8'-0"

PASSAGE WIDE -8'-0"

PASSAGE WIDE -8'-0"

PASSAGE WIDE -8'-0"

PASSAGE WIDE -8'-0"

PASSAGE WIDE -8'-0"

PASSAGE WIDE -7'-10½"

PASSAGE WIDE -8'-0"

PASSAGE WIDE -8'-0"

OPEN TERRACE

OPEN TERRACE

OPEN TERRACE

OPEN TERRACE

TERRACE

TERRACE

SITTING

SHOP # 34
12'-0"X30'-0"
= 360.00 SFT

SHOP # 33
12'-0"X30'-0"
= 360.00 SFT

SHOP # 32
12'-0"X30'-0"
= 360.00 SFT

SHOP # 35
24'-8½"X9'-7"
= 237.20 SFT

SHOP # 31
23'-6"X9'-7"
= 225.79 SFT

SHOP # 23
12'-1½"X14'-0"
= 169.75 SFT

SHOP # 24
11'-6"X14'-0"
= 161.00 SFT

SHOP # 25
11'-6"X14'-0"
= 161.00 SFT

SHOP # 26
11'-6"X14'-0"
= 161.00 SFT

SHOP # 27
11'-6"X14'-0"
= 161.00 SFT

SHOP # 28
11'-6"X14'-0"
= 161.00 SFT

SHOP # 29
11'-6"X14'-0"
= 161.00 SFT

SHOP # 30
14'-4½"X14'-0"
= 201.25 SFT

SHOP # 17
12'-1½"X14'-0"
= 169.75 SFT

SHOP # 16
11'-6"X14'-0"
= 161.00 SFT

SHOP # 15
11'-6"X14'-0"
= 161.00 SFT

SHOP # 14
11'-6"X14'-0"
= 161.00 SFT

SHOP # 13
11'-6"X14'-0"
= 161.00 SFT

SHOP # 12
11'-6"X14'-0"
= 161.00 SFT

SHOP # 11
11'-6"X14'-0"
= 161.00 SFT

SHOP # 10
14'-4½"X14'-0"
= 201.25 SFT

SHOP # 09
11'-11"X19'-5½"
= 232.30 SFT

SHOP # 08
11'-11"X19'-5½"
= 232.30 SFT

SHOP # 01
25'-1"X9'-7"
= 240.60 SFT

SHOP # 05
23'-1"X9'-7"
= 221.59 SFT

SHOP # 02
12'-0"X30'-0"
= 360.00 SFT

SHOP # 03
12'-0"X30'-0"
= 360.00 SFT

SHOP # 04
12'-0"X30'-0"
= 360.00 SFT

SHOP # 06
12'-1½"X30'-9"
= 372.69 SFT

SHOP # 07
12'-1½"X30'-9"
= 372.69 SFT

+16'-3"

+16'-3"

+16'-3"

DN

UP

DN

UP



F.F.E LAYOUT PLAN (SECOND FLOOR)

OFFICE - 24
12'-1½"X48'-0"
= 740.00 SFT

OFFICE - 23
12'-1½"X48'-0"
= 740.00 SFT

OFFICE - 22
10'-11"X27'-7"
= 383.00 SFT

OFFICE - 21
10'-11"X27'-7"
= 383.00 SFT

OFFICE - 20
10'-11"X27'-7"
= 383.00 SFT

OFFICE - 19
12'-0"X48'-0"
= 733.00 SFT

OFFICE - 18
12'-0"X48'-0"
= 733.00 SFT

OFFICE - 17
12'-0"X48'-0"
= 733.00 SFT

OFFICE - 16
11'-7"X27'-7"
= 407.00 SFT

OFFICE - 15
11'-7"X27'-7"
= 407.00 SFT

OFFICE - 14
11'-7"X27'-7"
= 407.00 SFT

OFFICE - 13
24'-3"X13'-4"
= 467.00 SFT

KITCHEN
5'-0"x5'-0"

KITCHEN
5'-6"x5'-0"

KITCHEN
5'-6"x5'-0"

KITCHEN
5'-6"x5'-0"

KITCHEN
5'-6"x5'-0"

KITCHEN
5'-6"x5'-0"

KITCHEN
5'-6"x5'-0"

KITCHEN
5'-6"x5'-0"

KITCHEN
5'-6"x5'-0"

KITCHEN
5'-6"x5'-0"

KITCHEN
5'-6"x5'-0"

BATH
5'-0"x5'-0"

BATH
5'-6"x5'-0"

BATH
5'-6"x5'-0"

BATH
5'-6"x5'-0"

BATH
5'-6"x5'-0"

BATH
5'-6"x5'-0"

BATH
5'-6"x5'-0"

BATH
5'-6"x5'-0"

BATH
5'-6"x5'-0"

BATH
5'-6"x5'-0"

BATH
5'-6"x5'-0"

O.T.S

+27'-0" PASSAGE WIDE -8'-0"

PASSAGE WIDE -8'-0"

PASSAGE WIDE -8'-0"

PASSAGE WIDE -8'-0"

O.T.S

BATH
5'-0"x5'-0"

KITCHEN
5'-0"x5'-0"

OFFICE - 01
14'-3"X20'-0"
= 363.00 SFT

PASSAGE WIDE -8'-0"

BATH
5'-6"x5'-0"

BATH
5'-6"x5'-0"

KITCHEN
5'-6"x5'-0"

KITCHEN
5'-6"x5'-0"

OFFICE - 02
11'-7"X27'-7"
= 407.00 SFT

OFFICE - 03
11'-7"X27'-7"
= 407.00 SFT

BATH
5'-6"x5'-0"

BATH
5'-3"x6'-11½"

KITCHEN
5'-6"x5'-0"

KITCHEN
6'-6"x5'-0"

OFFICE - 04
11'-7"X27'-7"
= 407.00 SFT

OFFICE - 05
12'-0"X48'-0"
= 733.00 SFT

OFFICE - 06
12'-0"X48'-0"
= 733.00 SFT

OFFICE - 07
12'-0"X48'-0"
= 733.00 SFT

BATH
5'-6"x5'-0"

BATH
5'-6"x5'-0"

KITCHEN
5'-6"x5'-0"

KITCHEN
5'-6"x5'-0"

OFFICE - 08
11'-1"X27'-7"
= 389.00 SFT

OFFICE - 09
10'-10"X27'-7"
= 380.00 SFT

BATH
5'-6"x5'-0"

BATH
5'-6"x5'-0"

KITCHEN
5'-6"x5'-0"

KITCHEN
5'-6"x5'-0"

OFFICE - 10
10'-10"X27'-7"
= 380.00 SFT

OFFICE - 11
12'-1½"X48'-0"
= 740.00 SFT

OFFICE - 12
12'-1½"X48'-0"
= 740.00 SFT

SHAFT

LIFT
7'-0"X7'-0"

PASSAGE WIDE 6'-0"

DN

UP

+27'-0"

ELECTRIC SHAFT

GARBAGE CHUTE
8'-9"X3'-4½"

LIFT
8'-0"X7'-6"

LIFT
8'-0"X7'-6"

LANDING

LANDING

DN

UP

VOID AREA



F.F.E LAYOUT PLAN (THIRD FLOOR)

OFFICE - 24
12'-1½"X48'-0"
= 740.00 SFT

OFFICE - 23
12'-1½"X48'-0"
= 740.00 SFT

OFFICE - 22
10'-11"X27'-7"
= 383.00 SFT

OFFICE - 21
10'-11"X27'-7"
= 383.00 SFT

OFFICE - 20
10'-11"X27'-7"
= 383.00 SFT

OFFICE - 19
12'-0"X48'-0"
= 733.00 SFT

OFFICE - 18
12'-0"X48'-0"
= 733.00 SFT

OFFICE - 17
12'-0"X48'-0"
= 733.00 SFT

OFFICE - 16
11'-7"X27'-7"
= 407.00 SFT

OFFICE - 15
11'-7"X27'-7"
= 407.00 SFT

OFFICE - 14
11'-7"X27'-7"
= 407.00 SFT

OFFICE - 13
24'-3"X13'-4"
= 467.00 SFT

BATH
5'-0"x5'-0"

ELECTRIC SHAFT
GARBAGE CHUTE
8'-9"X3'-4½"

LIFT
8'-0"X7'-6"

LIFT
8'-0"X7'-6"

LANDING

DN

UP

VOID-AREA

LANDING

O.T.S

PASSAGE WIDE -8'-0"

PASSAGE WIDE -8'-0"

+37'-9"

PASSAGE WIDE -8'-0"

PASSAGE WIDE -8'-0"

O.T.S

BATH
5'-0"x5'-0"

OFFICE - 01
14'-3"X20'-0"
= 363.00 SFT

PASSAGE WIDE -8'-0"

BATH
5'-6"x5'-0"

BATH
5'-6"x5'-0"

KITCHEN
5'-6"x5'-0"

KITCHEN
5'-6"x5'-0"

OFFICE - 02
11'-7"X27'-7"
= 407.00 SFT

OFFICE - 03
11'-7"X27'-7"
= 407.00 SFT

BATH
5'-6"x5'-0"

BATH
5'-3"x6'-11½"

KITCHEN
5'-6"x5'-0"

KITCHEN
6'-6"x5'-0"

OFFICE - 04
11'-7"X27'-7"
= 407.00 SFT

OFFICE - 05
12'-0"X48'-0"
= 733.00 SFT

OFFICE - 06
12'-0"X48'-0"
= 733.00 SFT

OFFICE - 07
12'-0"X48'-0"
= 733.00 SFT

BATH
5'-6"x5'-0"

BATH
5'-6"x5'-0"

KITCHEN
5'-6"x5'-0"

KITCHEN
5'-6"x5'-0"

OFFICE - 08
11'-1"X27'-7"
= 389.00 SFT

OFFICE - 09
10'-10"X27'-7"
= 380.00 SFT

BATH
5'-6"x5'-0"

BATH
5'-6"x5'-0"

KITCHEN
5'-6"x5'-0"

KITCHEN
5'-6"x5'-0"

OFFICE - 10
10'-10"X27'-7"
= 380.00 SFT

OFFICE - 11
12'-1½"X48'-0"
= 740.00 SFT

OFFICE - 12
12'-1½"X48'-0"
= 740.00 SFT

BATH
5'-0"x5'-0"

KITCHEN
5'-0"x5'-0"

PASSAGE WIDE 6'-0"

DN

UP

+37'-9"

F.F.E LAYOUT PLAN (THIRD FLOOR)



F.F.E LAYOUT PLAN (FOURTH FLOOR)



OFFICE - 24
12'-1½"X48'-0"
= 764.00 SFT

OFFICE - 23
12'-1½"X48'-0"
= 764.00 SFT

OFFICE - 22
10'-11"X27'-7"
= 395.00 SFT

OFFICE - 21
10'-11"X27'-7"
= 395.00 SFT

OFFICE - 20
10'-11"X27'-7"
= 395.00 SFT

OFFICE - 19
12'-0"X34'-0"
= 536.00 SFT

OFFICE - 18
12'-0"X34'-0"
= 536.00 SFT

OFFICE - 17
12'-0"X34'-0"
= 536.00 SFT

OFFICE - 16
11'-7"X27'-7"
= 420.00 SFT

OFFICE - 15
11'-7"X27'-7"
= 420.00 SFT

OFFICE - 14
11'-7"X27'-7"
= 420.00 SFT

OFFICE - 13
24'-3"X13'-4"
= 482.00 SFT

BATH
5'-0"x5'-0"

ELECTRIC SHAFT

GARBAGE CHUTE
8'-9"X3'-4½"

LIFT
8'-0"X7'-6"

LIFT
8'-0"X7'-6"

LANDING

VOID AREA

LANDING

DN

+59'-3"

UP

+59'-3"

PASSAGE WIDE -8'-0"

PASSAGE WIDE -8'-0"

PASSAGE WIDE -8'-0"

PASSAGE WIDE -8'-0"

O.T.S

O.T.S

OFFICE - 01
14'-3"X20'-0"
= 374.00 SFT

OFFICE - 02
11'-7"X27'-7"
= 420.00 SFT

OFFICE - 03
11'-7"X27'-7"
= 420.00 SFT

OFFICE - 04
11'-7"X27'-7"
= 420.00 SFT

OFFICE - 05
12'-0"X34'-0"
= 536.00 SFT

OFFICE - 06
12'-0"X34'-0"
= 536.00 SFT

OFFICE - 07
12'-0"X34'-0"
= 536.00 SFT

OFFICE - 08
11'-1"X27'-7"
= 402.00 SFT

OFFICE - 09
10'-10"X27'-7"
= 392.00 SFT

OFFICE - 10
10'-10"X27'-7"
= 392.00 SFT

OFFICE - 11
12'-1½"X48'-0"
= 764.00 SFT

OFFICE - 12
12'-1½"X48'-0"
= 764.00 SFT

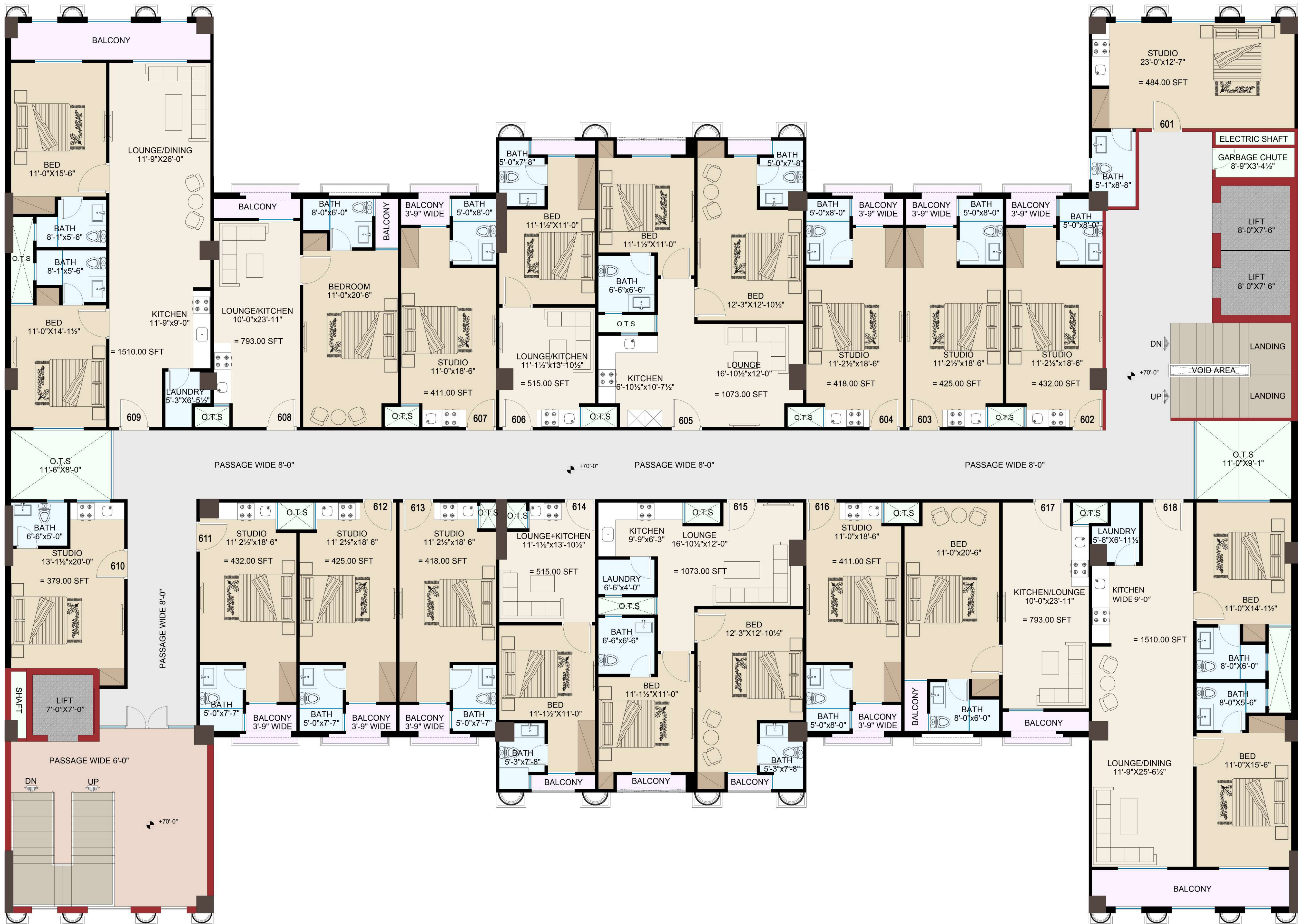
PASSAGE WIDE 6'-0"

DN

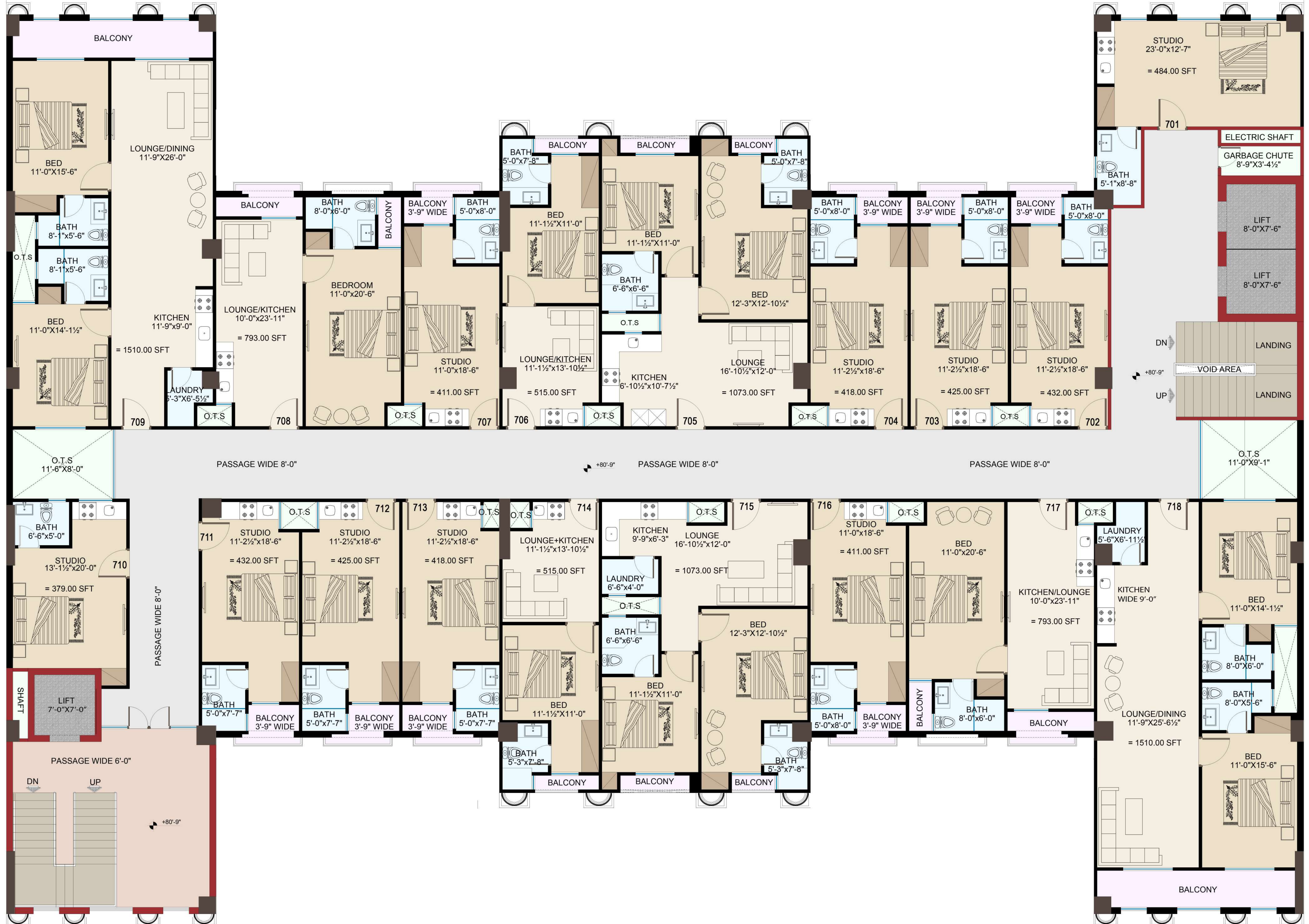
UP

+59'-3"

F.F.E LAYOUT PLAN (FIFTH FLOOR)



F.F.E LAYOUT PLAN (SIXTH FLOOR)



F.F.E LAYOUT PLAN (SEVENTH FLOOR)



F.F.E LAYOUT PLAN (TOP ROOF)